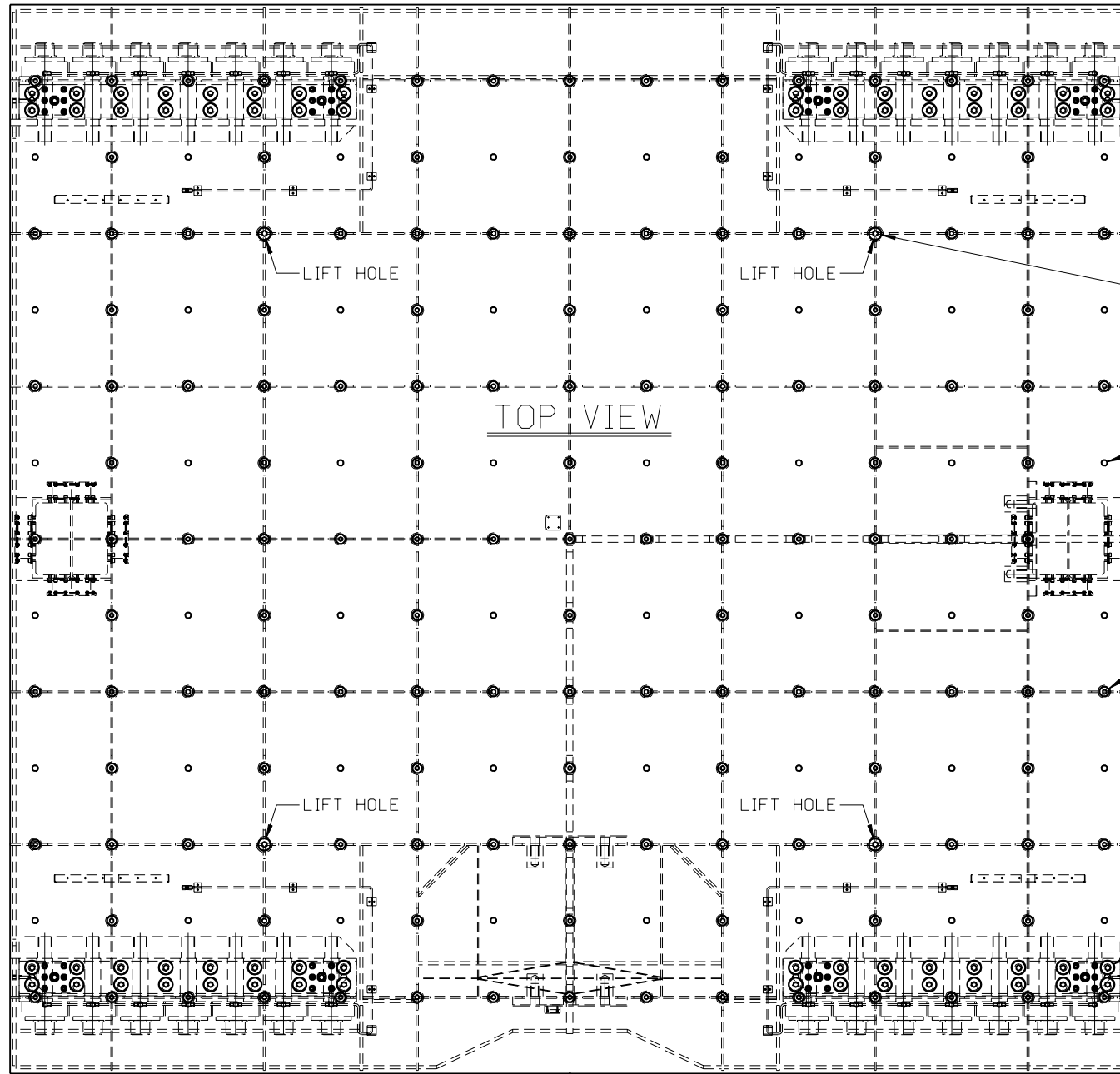


REAR

A
(SEE SHT 2)

NOTES:

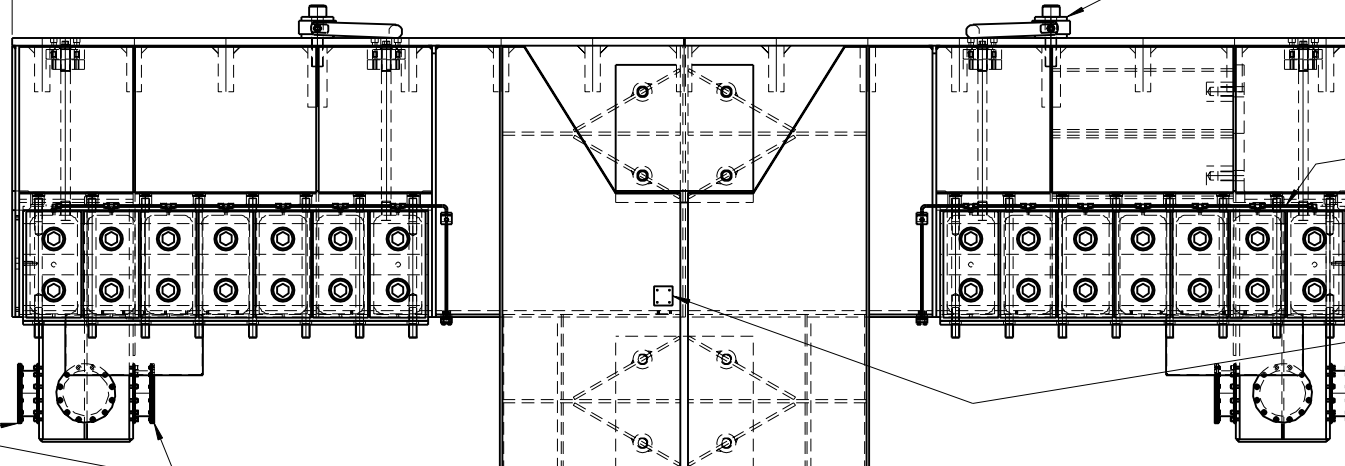
- 1 BACK OFF SET SCREWS AND CAP SCREWS & LOCK JAM NUTS BEFORE OPERATION. DO NOT REMOVE SETSCREWS-THEY ARE NOT INTERCHANGABLE.
- 2 LUBE AND TORQUE TO 6.7 FT-LBS
- 3 LUBE AND TORQUE TO 9.4 FT-LBS
- 4 LUBE AND TORQUE TO 34 FT-LBS
- 5 LUBE AND TORQUE TO 680 FT-LBS
- 6 LUBE AND TORQUE TO 800 FT-LBS



TOP VIEW

FRONT

A
(SEE SHT 2)



-01 ONLY
(BIAXIAL)

7
4

26
48

8
142

1

20
64

6 12
4 4

14 15 16
AR 48 48

2
28

37 38 39
1 4 4

REVISIONS				
DESCRIPTION	DFTSMN	APPVL	DATE	LETTER
DOCUMENTATION UPDATE -01 & -02 TO REV B				B
JAC	CLC	06/14/97		
				RULE 1

SOURCE/REF. DRAWING:
PROPRIETARY DATA
The information and design(s) disclosed herein are the property of MTS Systems Corporation and may not be used, reproduced or disclosed in any form except as granted in writing by MTS Systems Corporation. This restriction excludes information that is in the public domain or was legitimately in the prior possession of the recipient.

UNLESS OTHERWISE SPECIFIED				
MATERIAL DESCRIPTION	MATERIAL SIZE	FINISH	SCALE	TITLE
SEE PARTS LIST			1/12	TABLE COMPONENTS-T RAIL SEISMIC SYSTEM
.XXX HOLE SIZE TOLERANCE		DRAWN JAC		
0.000 TO .750	OVER .750 TO 1.500	DATE 05/29/96	CHECK CLC	ENGR CLC
+.010/- .002	+.015/- .003	DATE 06/27/96	DATE	DATE
GENERAL TOLERANCES		NEXT LEVEL 520812-01		
ANGLE +2°	X/Y ±1/4	PRODUCT CODE 316.04-13		
.X ±.1	.XX ±.03	SIZE NUMBER D	NUMBER 515330-XX	REV SEE TAB
MACHINED SURFACES 180°	.XXX ±.010	SHEET 1 OF 2		

PART NUMBER	REV	DESCRIPTION	DATE	ENG
-02	B	UNIAXIAL TABLE	06/27/96	CLC
515330-01	B	BIAXIAL TABLE	06/27/96	CLC

MTS SYSTEMS CORPORATION
EDEN PRAIRIE, MINNESOTA U.S.A. ©